

PUMP MONITORING AND OPTIMISATION



- 1 ●
- 2 ●
- 3 ●
- 4 ●
- 5 ●
- 6 ●
- 7 ●
- 8 ●
- 9 ●
- 10 ●
- 11 ●
- 12 ●
- 13 ●
- 14 ●
- 15 ●
- 16 ●

US

Who we are.

TELE stands for high quality research and development, a modern production location in Austria and a very strong team, which launches new products.

We have specialised on our core competences in the past decades - time relays and automation components. Through passion and professionalism, modern monitoring and control technology emerged in accordance with international standards for worldwide use at the highest quality levels. Today we are the Austrian market leader in the area of high quality monitoring and control technology for machines, plants and buildings with the world's largest assortment of time and monitoring relays.

As pioneers and progressive thinkers we are offering intelligent solutions for the monitoring of plants, buildings or machines to keep machinery and equipment running. Our mission is sustainable power production and power use, which will address the social change of the future on a long term basis.

That already reflects in TELE's new products, likewise, as daily lived at handling our resources. More than 100 employees try not only to meet the day to day requirements of our customers but try to exceed them and have been doing this since 1963.

YOUR BENEFITS:

- High availability
- 100% Made in Austria
- Short delivery times
- Rapid processing
- Customised solutions
- Over 40 years of experience

What we offer.

- Monitoring devices for physical values like current, voltage, temperature, level, etc.
- Comprehensive technical know-how through decades of experience
- Technological edge by sophisticated development
- Worldwide sales network
- Sustainability

Where we produce.

100 per cent of our core products are produced in Austria. Our core competences are research and development as well as production at our main location in Vienna with our team of highly qualified employees. Our own sales team in Austria and Germany as well as trade partners in over 50 countries form our global sales network.



Monitoring



Control



Communication



For transporting water or other liquids from A to B, pumps are required. TELE enables monitoring and optimisation of pumps **without additional sensors**. Secure and valid operating conditions are ensured by electrical parameters only. For assembly, no mechanical change is necessary. Therefore it is easily retrofittable.

SOLUTIONS

Information

Pump systems cause a substantial percentage of current worldwide consumption. As a result consequent analysis of operational data and long term optimisation are gaining huge energy saving potential. In addition

to that disturbances cause approximately 70 per cent of the life cycle costs of a pump and often end in production failure or entail enormous loss of production costs.¹⁾

YOUR BENEFITS:

- Improved reliability
- Increased operational reliability
- Optimised maintenance cycles
- Raised pump efficiency
- High expense resultant costs avoided



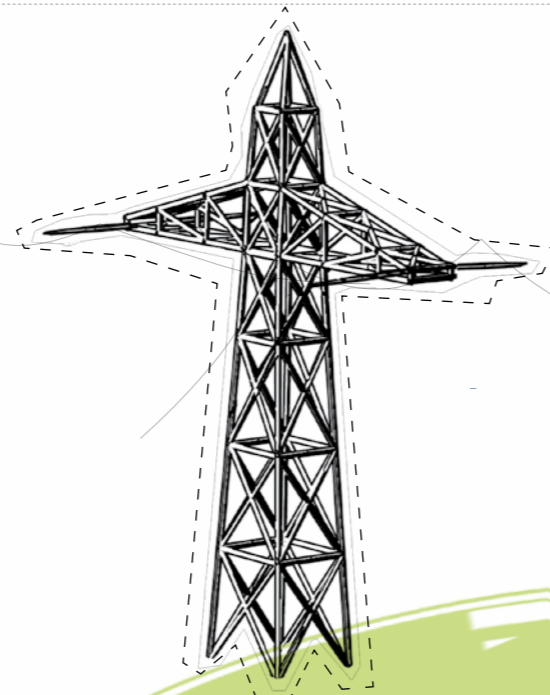
Pump monitoring

- Blockage
- Cavitation
- Dry running
- Filter pollution
- Overheating
- Wear
- Temperature



Mains monitoring

- Phase failure
- Phase sequence
- Voltage divergence (Under or overvoltage)



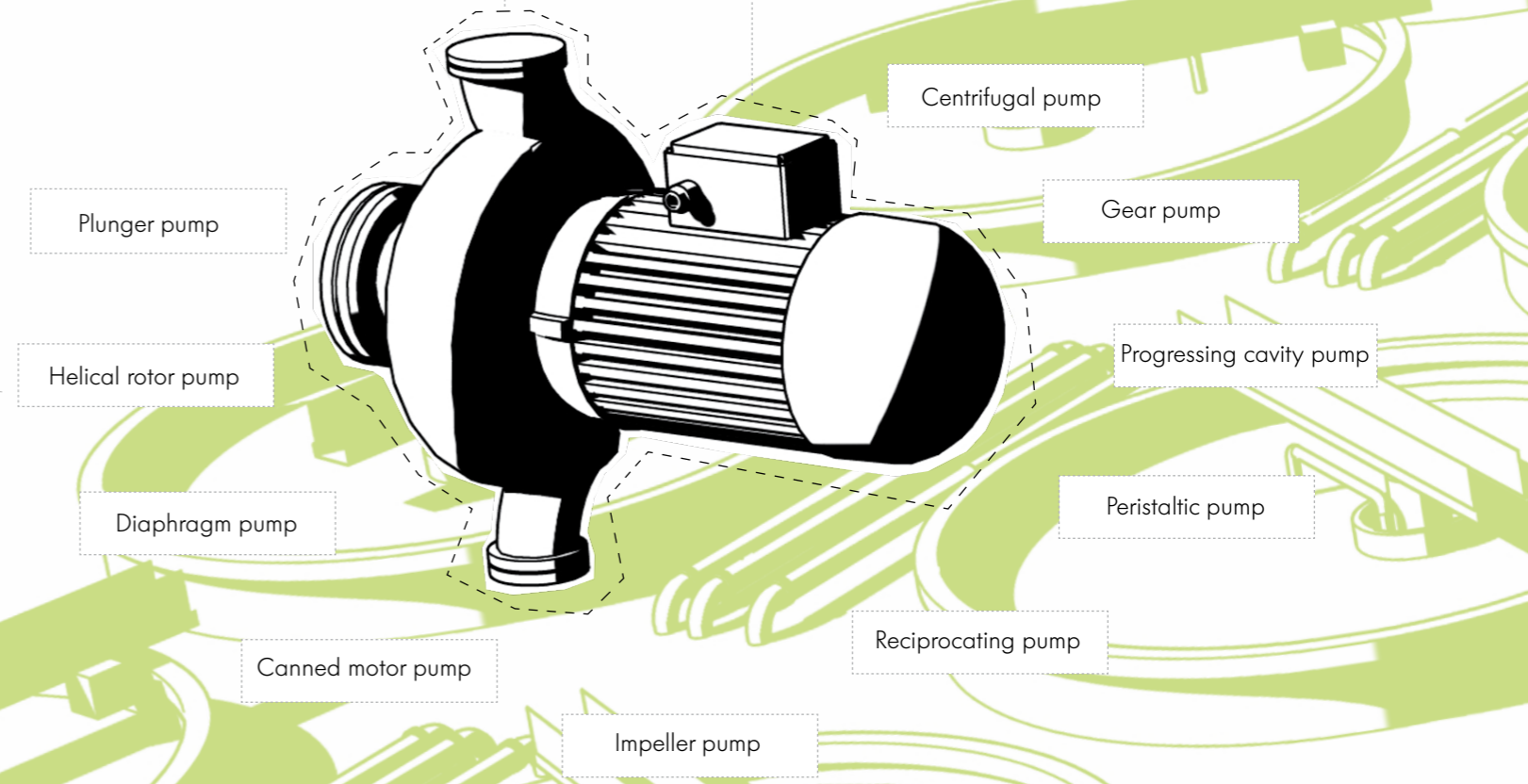
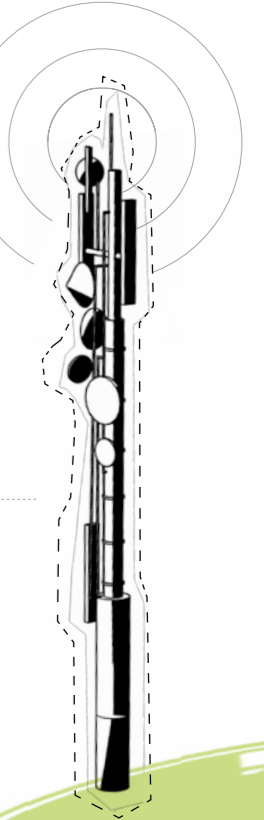
Pump controlling

- Level
- Pump start
- Pump soft start/stop
- Pump availability



Communication




- Data recording
- Error logging
- Error message
- Remote maintenance

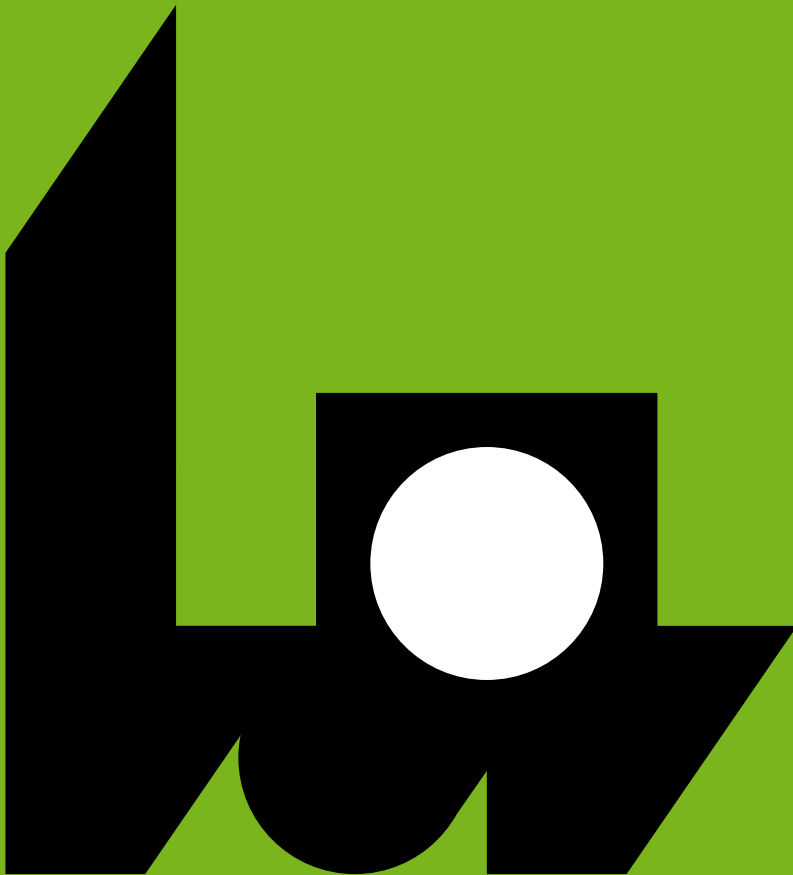


¹⁾ Brochure of Austrian energy agency: Technical manual solutions for the improvement of its engine systems, Vienna, <http://www.energyagency.at>

PRODUCTS



	Solution of	Benefit	by	Realised with													
 <p>Mains monitoring</p>	<table border="1"> <tr> <td>Phase failure</td> <td>Phase failure by phase interruption or voltage breakdown</td> </tr> <tr> <td>Phase sequence</td> <td>Phase sequence by wrong polarity of three phase mains</td> </tr> <tr> <td>Voltage divergence</td> <td>Under or overvoltage by bad quality of mains or reduced phase voltage</td> </tr> </table>	Phase failure	Phase failure by phase interruption or voltage breakdown	Phase sequence	Phase sequence by wrong polarity of three phase mains	Voltage divergence	Under or overvoltage by bad quality of mains or reduced phase voltage	<ul style="list-style-type: none"> Comprehensive voltage monitoring Guaranteed system and motor protection Rotation direction monitoring 	<ul style="list-style-type: none"> Comprehensive power supply: <ul style="list-style-type: none"> * Powered by measuring circuit up to 690V AC * Zoom voltage 24-240V AC/DC * Power modules up to 400V AC Integrated monitoring of asymmetry Detection of return voltage Neutral conductor monitoring 	<p>Voltage monitoring</p> <ul style="list-style-type: none"> Series GAMMA & ENYA <p>- Voltage monitoring relays - Phase failure relays - Phase sequence relays</p>							
	Phase failure	Phase failure by phase interruption or voltage breakdown															
	Phase sequence	Phase sequence by wrong polarity of three phase mains															
Voltage divergence	Under or overvoltage by bad quality of mains or reduced phase voltage																
<table border="1"> <tr> <td>Blockage</td> <td>Clogging or wedging by foreign materials → Overload</td> </tr> <tr> <td>Cavitation</td> <td>Destruction of the impeller by gasification and pressure surges → Monitoring of valid operating conditions</td> </tr> <tr> <td>Dry running</td> <td>Dry running through lack of medium by closed valve or empty tank → Underload</td> </tr> <tr> <td>Filter pollution</td> <td>Reduced output due to polluted filters → Underload</td> </tr> <tr> <td>Overheating</td> <td>Circulation and heating up by unexhausted liquid → Underload</td> </tr> <tr> <td>Wear</td> <td>Impeller wear, bearing failure, etc. causes inadmissible operating condition → Under or overload</td> </tr> <tr> <td>Temperature</td> <td>Increase of motor temperature by phase failure, frequent start up or blockage → Overtemperature</td> </tr> </table>	Blockage	Clogging or wedging by foreign materials → Overload	Cavitation	Destruction of the impeller by gasification and pressure surges → Monitoring of valid operating conditions	Dry running	Dry running through lack of medium by closed valve or empty tank → Underload	Filter pollution	Reduced output due to polluted filters → Underload	Overheating	Circulation and heating up by unexhausted liquid → Underload	Wear	Impeller wear, bearing failure, etc. causes inadmissible operating condition → Under or overload	Temperature	Increase of motor temperature by phase failure, frequent start up or blockage → Overtemperature	<ul style="list-style-type: none"> Optimized operation and transparency Increased operating and process security Minimized costs by condition-based preventive maintenance Extended lifetime Warning in case of inadmissible operating conditions Ensuring system availability Prevention of unpredictable production loss Increased efficiency by continuous control 	<ul style="list-style-type: none"> Direct measuring up to 690V and 16A Devices with analogue output Digital adjustable versions available Temperature monitoring of motor winding Operation after frequency converter possible 	<p>Load monitoring</p> <ul style="list-style-type: none"> Series GAMMA <p>- Power factor monitoring (cos φ) - True power monitoring</p>
Blockage	Clogging or wedging by foreign materials → Overload																
Cavitation	Destruction of the impeller by gasification and pressure surges → Monitoring of valid operating conditions																
Dry running	Dry running through lack of medium by closed valve or empty tank → Underload																
Filter pollution	Reduced output due to polluted filters → Underload																
Overheating	Circulation and heating up by unexhausted liquid → Underload																
Wear	Impeller wear, bearing failure, etc. causes inadmissible operating condition → Under or overload																
Temperature	Increase of motor temperature by phase failure, frequent start up or blockage → Overtemperature																
<table border="1"> <tr> <td>Level</td> <td>Level monitoring and controlling by conductive probes</td> </tr> <tr> <td>Pump start</td> <td>Prevent high current peaks and high torsional load by Star Delta Relays</td> </tr> <tr> <td>Pump soft start/stop</td> <td>Reduce mains and motor load by conducted starting and stopping</td> </tr> <tr> <td>Pump availability</td> <td>Reliable operational readiness of reserve aggregate by alternating operation</td> </tr> </table>	Level	Level monitoring and controlling by conductive probes	Pump start	Prevent high current peaks and high torsional load by Star Delta Relays	Pump soft start/stop	Reduce mains and motor load by conducted starting and stopping	Pump availability	Reliable operational readiness of reserve aggregate by alternating operation	<ul style="list-style-type: none"> Level monitoring of conductive substances Prohibition of inefficient operating conditions Prevention of personal damage 	<ul style="list-style-type: none"> Pumping up or down adjustable Minimum and maximum monitoring Secure galvanic isolation of measuring circuit 	<p>Level monitoring</p> <ul style="list-style-type: none"> Series GAMMA & ENYA 						
Level	Level monitoring and controlling by conductive probes																
Pump start	Prevent high current peaks and high torsional load by Star Delta Relays																
Pump soft start/stop	Reduce mains and motor load by conducted starting and stopping																
Pump availability	Reliable operational readiness of reserve aggregate by alternating operation																
 <p>Pump controlling</p>	<table border="1"> <tr> <td>Data recording</td> <td rowspan="4">Monitoring and communicating system status, send measured values to control system and reacting in case of an error</td> </tr> <tr> <td>Error logging</td> </tr> <tr> <td>Error message</td> </tr> <tr> <td>Remote maintenance</td> </tr> </table>	Data recording	Monitoring and communicating system status, send measured values to control system and reacting in case of an error	Error logging	Error message	Remote maintenance	<ul style="list-style-type: none"> Optimised starting Minimisation of starting current Less burden of mains 	<ul style="list-style-type: none"> Selectable transit time Broad, adjustable star-time range 	<p>Star Delta Relays</p> <ul style="list-style-type: none"> Series DELTA, GAMMA & ENYA 								
	Data recording	Monitoring and communicating system status, send measured values to control system and reacting in case of an error															
Error logging																	
Error message																	
Remote maintenance																	
<table border="1"> <tr> <td>Level</td> <td>Level monitoring and controlling by conductive probes</td> </tr> <tr> <td>Pump start</td> <td>Prevent high current peaks and high torsional load by Star Delta Relays</td> </tr> <tr> <td>Pump soft start/stop</td> <td>Reduce mains and motor load by conducted starting and stopping</td> </tr> <tr> <td>Pump availability</td> <td>Reliable operational readiness of reserve aggregate by alternating operation</td> </tr> </table>	Level	Level monitoring and controlling by conductive probes	Pump start	Prevent high current peaks and high torsional load by Star Delta Relays	Pump soft start/stop	Reduce mains and motor load by conducted starting and stopping	Pump availability	Reliable operational readiness of reserve aggregate by alternating operation	<ul style="list-style-type: none"> Optimised control of start and stop Reduced burden of mains at heavy or long-term starting/stopping No additional ventilation No external bypass contactors Higher energy efficiency as frequency converter at full load 	<ul style="list-style-type: none"> Adaptive acceleration control Integrated bypass contactor Motor protective function 	<p>Soft starter</p> <ul style="list-style-type: none"> Series CSXi, EMX3 						
Level	Level monitoring and controlling by conductive probes																
Pump start	Prevent high current peaks and high torsional load by Star Delta Relays																
Pump soft start/stop	Reduce mains and motor load by conducted starting and stopping																
Pump availability	Reliable operational readiness of reserve aggregate by alternating operation																
 <p>Communication</p>	<table border="1"> <tr> <td>Data recording</td> <td rowspan="4">Monitoring and communicating system status, send measured values to control system and reacting in case of an error</td> </tr> <tr> <td>Error logging</td> </tr> <tr> <td>Error message</td> </tr> <tr> <td>Remote maintenance</td> </tr> </table>	Data recording	Monitoring and communicating system status, send measured values to control system and reacting in case of an error	Error logging	Error message	Remote maintenance	<ul style="list-style-type: none"> Management of production peaks Optimised utilisation by peak load covering Efficient protection of mains 	<ul style="list-style-type: none"> Parallel operation Switching without downtimes Adjustment of switch-on delay Zero-voltage safety after voltage failure or disconnection 	<p>Pump alternator</p> <ul style="list-style-type: none"> Series GAMMA 								
	Data recording	Monitoring and communicating system status, send measured values to control system and reacting in case of an error															
Error logging																	
Error message																	
Remote maintenance																	
<table border="1"> <tr> <td>Data recording</td> <td rowspan="4">Monitoring and communicating system status, send measured values to control system and reacting in case of an error</td> </tr> <tr> <td>Error logging</td> </tr> <tr> <td>Error message</td> </tr> <tr> <td>Remote maintenance</td> </tr> </table>	Data recording	Monitoring and communicating system status, send measured values to control system and reacting in case of an error	Error logging	Error message	Remote maintenance	<ul style="list-style-type: none"> Better planning of faults and maintenance Remote maintenance and remote signalling Easy linking to control systems Simple control functions 	<ul style="list-style-type: none"> Varied communication capabilities: <ul style="list-style-type: none"> * GSM/GPRS * Ethernet * Serial Interface * Digital In/Outputs * WEB-portal * Integrated WEB-PLC-based, graphical programming * Logical operators like AND, OR, XOR, etc. 	<p>GSM/GPRS Communication module</p>									
Data recording	Monitoring and communicating system status, send measured values to control system and reacting in case of an error																
Error logging																	
Error message																	
Remote maintenance																	



Technik braucht Kontrolle: TELE combines the power of research and development, an Austrian production base and a strong team that readies its products for the market. The company grew to its present size on the strength of its timing relays and automation components, and its development has been shaped by the company's focus on monitoring techniques. We are pioneers and trendsetters, offering intelligent solutions for monitoring installations, buildings and machines and keeping them running. With passion and professional expertise, we at TELE create the very latest monitoring and control technology to the very highest standards of quality and in compliance with international standards for use all over the world.

Founded in 1963 as a family business, TELE now has its headquarters and main production facilities in Vienna, with branches in Germany and the UK and a dense network of more than 60 trading partners throughout the world. Our long-standing relationships with customers from all areas of industry and our innovative solutions for challenging problems have made us a reliable and versatile partner. Our striking green design is an external sign of our inner values – quality and innovation are the basis of our long-term success and our orientation for the future.

TELE • Vorarlberger Allee 38 • 1230 Vienna • Austria
Tel. +43 / 1 / 614 74 - 0 • Fax +43 / 1 / 614 74 - 100
www.tele-online.com